

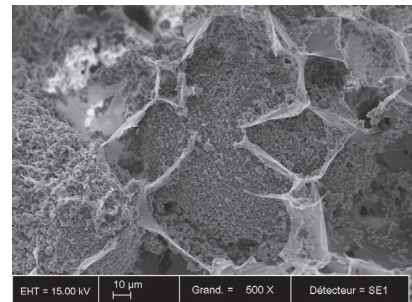
In'Oss™ Moldable Synthetic Bone Graft

Built on the MBCP™ Technology

Moldable
Ready to use
Stable in the site
Osteoconductive



- An optimal balance between MBCP™ micro granules – Hydroxyapatite (HA), Beta Tri-Calcium Phosphate (β-TCP) – and an absorbable hydrogel, acting as a carrier for rapid vascularization and mineralization
- Ready to use and avoids the hydration and manipulation phases
- Hydrogel creates large spaces between MBCP™ micro-porous particles to form extra spaces for cells spreading and fluids diffusion
- Chemistry encourages the rapid formation of natural bone and the growth of capillary blood vessels throughout matrix
- Biocompatible and absorbable



Interconnected structure between the micro-porous granules and hydrogel

INDICATIONS FOR USE

Extraction sockets with implant placement	Sinus lift augmentation
Periodontal bone defect and/or furcation	Vertical ridge augmentation

ORDERING INFORMATION

Product Code	Description	Volume
BT-1002PU50DE	Putty in syringe	0.5mL
BT-1001PU01DE	Putty in syringe	1.0mL (2 x 0.5 mL)

In'Oss™ Material is supplied sterile and CE-marked as a Class III Medical Device according to 123 Council Directive EEC/93/42
 MBCP™ and In'Oss™ are trademarks of Biomatlante
 Manufactured by Biomatlante - 5 Rue Edouard Belin - 44360 Vigneux de Bretagne - France
 Distributed by Keystone Dental - 144 Middlesex Turnpike - Burlington, MA 01803 - USA