

EZ Cure™ Resorbable Collagen Membrane

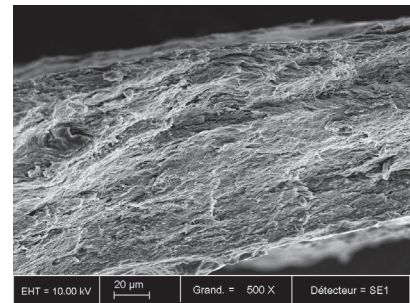
- 100% natural collagen
- Cross-linked for longer-lasting barrier
- Conforms perfectly to the surrounding bone
- Excellent handling characteristics make the procedure simple with no need to tack or suture



Barrier function lasts for 3 - 6 months*

EZ Cure™ is a porcine collagen type I and type III intended for guided bone and tissue regeneration (GBR and GTR).

- Maintains functional integrity for greater than 12 weeks, aiding the regenerative process
- Biocompatible and safe
- Recommended in combination with a bone graft material to aid in new bone healing by osteoconduction
- Sterilized by irradiation and packaged in double pouches



EZ Cure™ collagen structure

INDICATIONS FOR USE

Periodontal / dental surgery procedures	Grafting around dental implants
Periodontal defects	Bone defects
Ridge augmentation	Wound healing post-surgery

ORDERING INFORMATION

Product Code	Description	Package Qty
BT-0701EZC1525	15 x 25 mm	1
BT-0901EZC1525	15 x 25 mm	2
BT-0702EZC2030	20 x 30 mm	1
BT-0703EZC3040	30 x 40 mm	1

*Data on files, Biomatlante

EZ Cure™ material is supplied sterile and CE-marked as a Class III Medical Device

Ez Cure™ is a trademark of Biomatlante

Manufactured by Biomatlante - 5 Rue Edouard Belin - 44360 Vigneux de Bretagne - France

Distributed by Keystone Dental - 144 Middlesex Turnpike - Burlington, MA 01803 - USA